



AUSWAVE PRODUCTS™



PROUDLY SERVING  
THE ARCHITECTURAL  
AND DRAINAGE  
MARKETS FOR

15  
YEARS

❖ ARCHITECTURAL

❖ BATHROOM

❖ CIVIL

❖ CLICK DRAIN

❖ FLOOR GRATES & ENTRY MATS

❖ LINEAR SURFACE WATER DRAINAGE

❖ TREE GRATES

❖ WATER FEATURES

❖ WEDGEWIRE GRATES



# TABLE OF CONTENTS



❖ INTRODUCTION

❖ TILE INSERTS

❖ SHOWER GRATES

❖ LINEAR SURFACE WATER DRAINAGE

❖ ARCHITECTURAL GRATES

❖ PLATFORMS AND DECKS

❖ FLOOR GRATES AND ENTRY MATS

❖ TREE GRATES

❖ WATER FEATURES

❖ WEDGEWIRE GRATES

❖ CLICKDRAIN

❖ CONTACT US

❖ **SEAN KIRK**

☎ 0404 165 477

✉ [sean@auswave.com.au](mailto:sean@auswave.com.au)

❖ **DOUG MATTHEWS**

☎ 0414 672 220

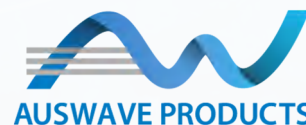
✉ [doug@auswave.com.au](mailto:doug@auswave.com.au)

[www.auswave.com.au](http://www.auswave.com.au)





# INTRODUCTION



## CONTACT US

AUSWAVE PRODUCTS (AUST)  
PTY LTD  
A.B.N. 28 613 210 316  
PO Box 110  
Ingleburn NSW 1890  
02 9876 8143

## MADE IN AUSTRALIA

Our product is proudly manufactured in Australia for Australian conditions. We deliver a higher quality product than imports, ensuring a longer lasting and more durable product by design and construction.

## OUR PRODUCTS ARE ALIGNED TO:

- ◆ Aust / NZ Load Standards
- ◆ Slip Resist Australian Standards
- ◆ Bike Safe Standards
- ◆ \*CERTIFICATION AVAILABLE ON REQUEST
- ◆ HEELGUARD Compliant

## STANDARD SPECS

- ◆ Wheelchair Compliant AS1428.2 (part 2 clause 9C)
- ◆ Cycle Safe AS 3996 (clause 3.3.6)

We are an Australian owned company that has been servicing the national drainage / architectural market for the past 15 years.

Our products are orientated around the bespoke market, stainless steel heelguard grating being the primary ingredient in our designs.

With a full CAD drafting system at our disposal and a collective 50+ years experience in the drainage industry, we will design to your specifications, from concept through to install.

Situated in Sydney, we are on-call for site measure and design advice when required locally, as well as interstate.



## SEAN KIRK

☎ 0404 165 477

✉ [sean@auswave.com.au](mailto:sean@auswave.com.au)

## DOUG MATTHEWS

☎ 0414 672 220

✉ [doug@auswave.com.au](mailto:doug@auswave.com.au)

[www.auswave.com.au](http://www.auswave.com.au)





# TILE INSERTS

## TILE INSERT ADVANTAGES

- ◆ Available in both point and linear styles
- ◆ Manufactured using 304 or 316 grade stainless steel
- ◆ Effective drainage
- ◆ Seamless visual impact
- ◆ Easy to Install
- ◆ Available in a range of sizes
- ◆ Custom solutions available

We offer superior material selection, design and manufacturing practices, ensuring a stronger, better looking and longer lasting product.

## SEAMLESS DRAINAGE DESIGN

If you are looking for a visually seamless alternative to drainage grates, tile inserts are the product for you!

Tile Insert grates can be installed wherever drainage is required for a tiled floor, be it in a shower, bathroom, laundry, outdoor areas, and even commercial and public spaces.

The beauty of tile insert drains is that they blend with your choice of tile, be it ceramic, natural stone, chrome, crystal, terracotta, travertine, glass, tile mosaic or Luxtouch.



### SEAN KIRK

☎ 0404 165 477

✉ [sean@auswave.com.au](mailto:sean@auswave.com.au)

### DOUG MATTHEWS

☎ 0414 672 220

✉ [doug@auswave.com.au](mailto:doug@auswave.com.au)

[www.auswave.com.au](http://www.auswave.com.au)



# SHOWER GRATES



## SHOWER GRATE STYLES

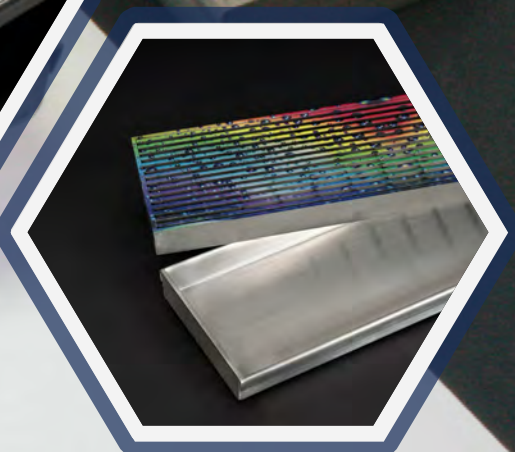
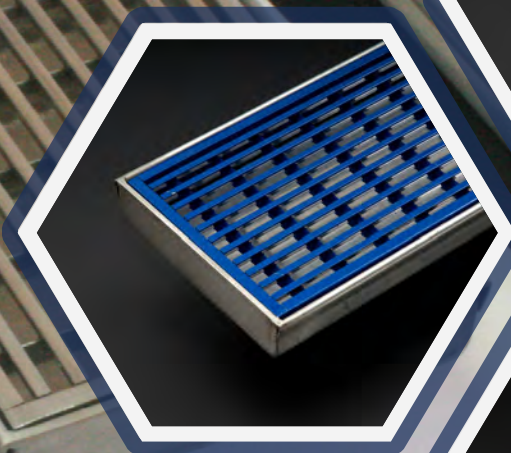
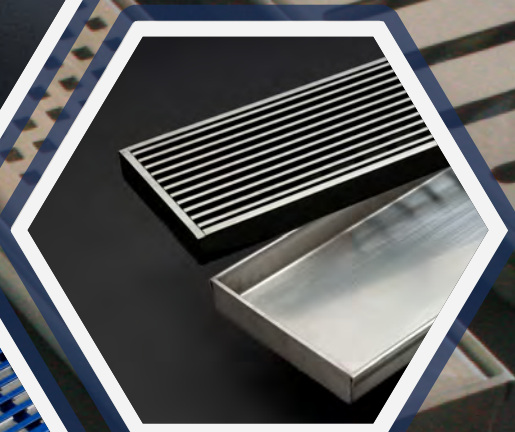
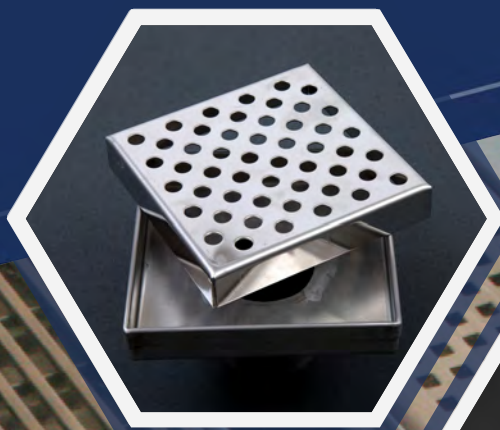
- ◆ Linear and Point Drain Styles
- ◆ Wedgewire or Pressed Metal Grates
- ◆ Tile Insert Drains
- ◆ Colours, Prints and Plated Grates
- ◆ Custom Shower Grates

## ENDLESS DESIGN POSSIBILITIES!

Fabricated out of 304 and 316 grade stainless steel, our high quality shower grates are available in various designs and lengths, ensuring the perfect match to your shower!

The rust resistant nature of stainless steel makes it the ideal solution for shower grates. It is a longer lasting material as well as an elegant finish to any bathroom. Additionally, our drainage system resist the accumulation of soap scum, deposits, mineralisation, dirt and so forth.

Our stainless steel shower grates are 100% Australian manufactured. Because we sell custom shower grates in any length, width and shape, each one is hand crafted to suit your custom drain and grate requirements.



◆ **SEAN KIRK**

☎ 0404 165 477

✉ [sean@auswave.com.au](mailto:sean@auswave.com.au)

◆ **DOUG MATTHEWS**

☎ 0414 672 220

✉ [doug@auswave.com.au](mailto:doug@auswave.com.au)

[www.auswave.com.au](http://www.auswave.com.au)





# LINEAR SURFACE WATER DRAIN



## HEELGUARD LINEAR SURFACE WATER GRATES

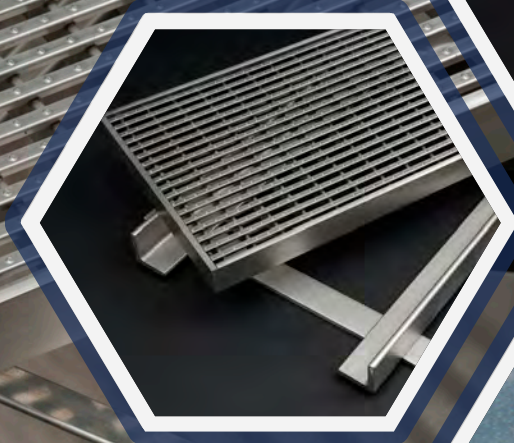
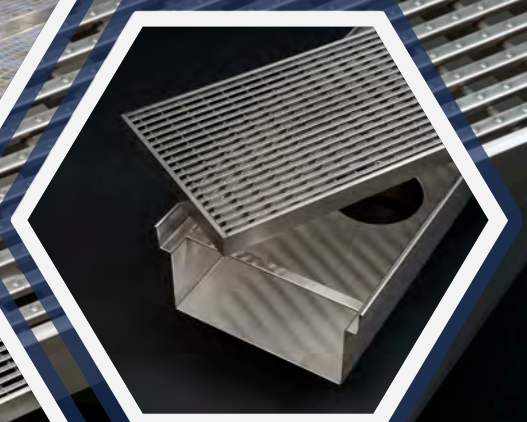
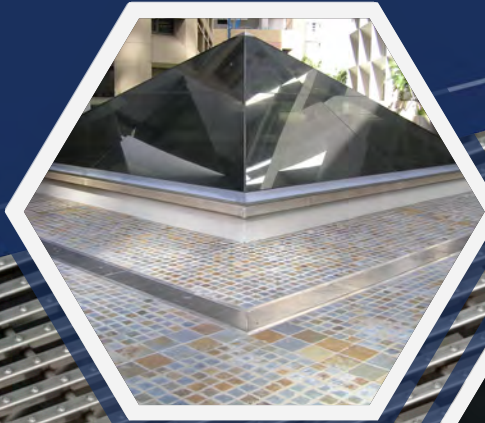
Our Heelguard grates are made in Australia, to Australian standards. Our grates endure rigorous testing to ensure the strong, durable, slip resistant and heel-safe grates that we pride ourselves on producing.

## LINEAR SURFACE WATER DRAINAGE SOLUTIONS

A big name for a broad scope - surface water drains are all around us!

At Auswave Products we provide linear surface water drainage solutions for a wide range of applications, from residential to civil drainage projects.

With a wealth of experience in the drainage industry, choice material selection (ranging from 304 - 316 grade stainless steel), and a commitment to product excellence, we can ensure that you get the right product for you surface water drainage needs.



### SEAN KIRK

☎ 0404 165 477

✉ [sean@auswave.com.au](mailto:sean@auswave.com.au)

### DOUG MATTHEWS

☎ 0414 672 220

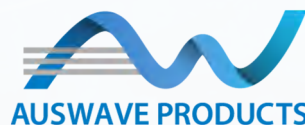
✉ [doug@auswave.com.au](mailto:doug@auswave.com.au)

[www.auswave.com.au](http://www.auswave.com.au)





# ARCHITECTURAL GRATES



## ▶ WHY STAINLESS STEEL HEELGUARD?

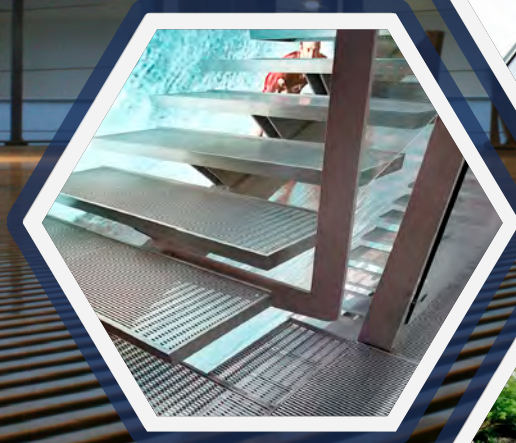
- ◆ Light egress
- ◆ Safe for high heels
- ◆ Structural stability
- ◆ Hydraulic properties
- ◆ Aesthetically appealing
- ◆ Durability

## HEELGUARD ARCHITECTURAL GREATS!

At Auswave Products we supply a broad range of Heelguard products for the architectural market.

Having worked closely with designers and architects, we are adept at recognising their various needs. Our wedgewire Heelguard products satisfy a plethora of possibilities for contemporary design.

More than just a drainage product, heelguard can be used to fabricate a number of products to stunning visual effect! Our custom architectural grates are used for entry mats, stairs, ventilation grills, bar tops, street furniture, water features, walk bridges and beyond!



### ◆ SEAN KIRK

☎ 0404 165 477

✉ [sean@auswave.com.au](mailto:sean@auswave.com.au)

### ◆ DOUG MATTHEWS

☎ 0414 672 220

✉ [doug@auswave.com.au](mailto:doug@auswave.com.au)

[www.auswave.com.au](http://www.auswave.com.au)



10kN  
RESIDENTIAL PRODUCTS ONLY  
NO VEHICULAR TRAFFIC



80kN  
RESIDENTIAL PRODUCTS ONLY  
VEHICULAR TRAFFIC ONLY  
LIGHT TRUCKS ONLY  
VEHICULAR TRAFFIC ONLY  
VEHICULAR TRAFFIC ONLY



150kN  
LIGHT TRUCKS ONLY  
VEHICULAR TRAFFIC ONLY  
VEHICULAR TRAFFIC ONLY  
VEHICULAR TRAFFIC ONLY



210kN  
HEAVY TRUCKS ONLY  
VEHICULAR TRAFFIC ONLY  
VEHICULAR TRAFFIC ONLY  
VEHICULAR TRAFFIC ONLY



400kN  
AREA GRADES TO CONTAIN  
VEHICULAR TRAFFIC ONLY  
VEHICULAR TRAFFIC ONLY  
VEHICULAR TRAFFIC ONLY



600kN  
AIRPORT APPLICABLE  
VEHICULAR TRAFFIC ONLY  
VEHICULAR TRAFFIC ONLY  
VEHICULAR TRAFFIC ONLY



900kN  
AIRPORT TRAFFIC  
VEHICULAR TRAFFIC ONLY  
VEHICULAR TRAFFIC ONLY  
VEHICULAR TRAFFIC ONLY



# PLATFORMS AND DECKS



## WHY STAINLESS STEEL GRATES?

- ◆ Well drained
- ◆ Slip resistant and safe for high heels
- ◆ Corrosion resistant
- ◆ Durable and long lasting
- ◆ Great strength to weight ratio
- ◆ Aesthetically appealing

Auswave Products Platforms and Decks offer all the substance required for outdoor and industrial installations and all the style to satisfy modern architectural lofts and balconies.

## TAKING PLATFORMS AND DECKS TO NEW HEIGHTS

Platforms and decks are frequently subjects to harsh conditions, from weather and water, to heavy foot traffic.

At Auswave Products, we design and manufacture platforms and decks for a number of different environments, including domestic, commercial, civil and industrial projects.

Our stainless steel heelguard grating combines unique qualities able to handle all that is required and endured by platforms and decks.



◆ **SEAN KIRK**

☎ 0404 165 477

✉ [sean@auswave.com.au](mailto:sean@auswave.com.au)

◆ **DOUG MATTHEWS**

☎ 0414 672 220

✉ [doug@auswave.com.au](mailto:doug@auswave.com.au)

[www.auswave.com.au](http://www.auswave.com.au)





# FLOOR GRATES AND ENTRY MATS



## SAFETY WHERE IT COUNTS!

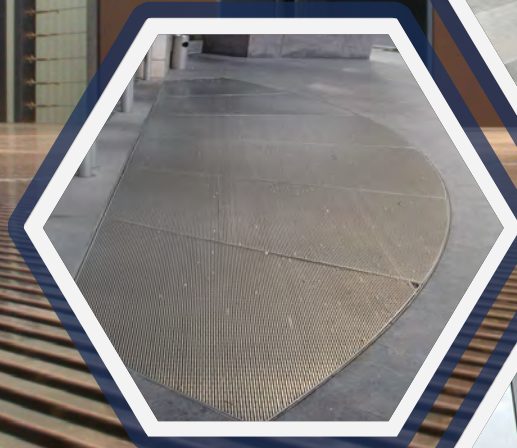
- ◆ Slip resistant
- ◆ Safe for high heels
- ◆ Wheelchair friendly
- ◆ Material selection grades 304/316/515
- ◆ Grates aligned with AUST/NZ load rating standards

We pride ourselves on our ability to adapt to the needs of our clients. Our innovative line of stainless steel Heelguard floor grates and entry mats can be used to suit a variety of applications, from industrial facilities to municipal areas and beyond.

## FLOOR GRATING AND ENTRY MAT GRILLS

Floor grating and entry mats meet an essential need for buildings; removing water and waste build up in areas with high traffic. They are functionally important but also need to be safe for use, aesthetically pleasing, and highly durable.

At Auswave Products, we understand how important it is for our clients to receive quality products. We manufacture our floor grills to Australian Design Standards, ensuring that you get an efficient and superior product aligned to the appropriate load rating and slip resistance value standards.



### SEAN KIRK

☎ 0404 165 477

✉ [sean@auswave.com.au](mailto:sean@auswave.com.au)

### DOUG MATTHEWS

☎ 0414 672 220

✉ [doug@auswave.com.au](mailto:doug@auswave.com.au)

[www.auswave.com.au](http://www.auswave.com.au)





# TREE GRATES



## GREAT FOR TREES!

Our tree grates have been specially designed to suit the Australian environment, and are able to withstand the harshest condition from weather, as well as heavy pedestrian traffic.

We are dedicated to producing tree grates using high grade 304 and 316 stainless steel, ensuring a practical, long lasting product, with a stylish, modern finish.

- ◆ Easy to install
- ◆ Available in a range of styles and sizes
- ◆ Custom solutions available

## TREE GRATES FUNCTION AND FEATURE!

Our commercial and industrial quality stainless steel tree grates offer protection, not just for trees, but also for pedestrians using public walkways. They allow rainwater to seep through to the tree's roots and down to the ground, while providing a safe extension of the footpath. With our stainless steel landscape grates, you can rest assured that you are getting maximum safety and protection, as well as a decorative feature, designed to complement the surrounding area.



### SEAN KIRK

☎ 0404 165 477

✉ [sean@auswave.com.au](mailto:sean@auswave.com.au)

### DOUG MATTHEWS

☎ 0414 672 220

✉ [doug@auswave.com.au](mailto:doug@auswave.com.au)

[www.auswave.com.au](http://www.auswave.com.au)



10kN  
PEDESTRIAN PRODUCTS ONLY  
NO VEHICULAR TRAFFIC



80kN  
SUITABLE FOR A VEHICLE TO  
CARRY THE EQUIPMENT AND  
LIGHT TRAFFIC SUCH AS PAVING  
MACHINES ON THE ROAD



150kN  
LIGHT TRUCKS, BUSES & BULDOZERS  
CARRYING UP TO 15 TONNES ON  
GRADE SURFACES. SUITABLE FOR  
ROADS WITH A MAX. TRUCKS  
ON THE ROAD



210kN  
HEAVY TRUCKS AT LOW  
SPEEDS



400kN  
AREA SUITABLE TO CONTAIN  
WEIGHTS OF EQUIPMENT  
EQUIPMENT



600kN  
AIRPORT APPLICABLE



900kN  
AIRPORT TARMAC



# WATER FEATURES



## ➤ TYPES OF WATER FEATURES WE PRODUCE:

### ➤ WATER FOUNTAINS

Indoor or outdoor, we design water fountains that are functional, dramatic and elegant to view. We work closely with our clients to produce a fully customised product that is project perfect. For an aesthetically pleasing, low maintenance, long-lasting and dramatic water fountain, our products are your number one choice.

### ➤ WATER LIGHT SHOWS

Our artificial water features are constructed to the highest possible standard to ensure customer satisfaction. We work with our clients to produce amazing water light show that are stunning, refined, safe and to clients' specifications.

### ➤ INTERACTIVE WATER FOUNTAINS

We can create large water features that are professional, interactive, safe and pleasing. As experts in designing and manufacturing stainless steel grate and drainage products, we can make your interactive water fountain vision a reality.

## SPECTACULAR STAINLESS STEEL WATER FEATURES!

We manufacture large water features for a broad range of different projects. Our water feature grates are fabricated out of the finest stainless steel for the highest quality results. Stainless steel is corrosion resistant, long lasting and low maintenance.

Our water features are perfect for use by councils and architects, for city-scapes, parks and beyond!



### ◆ SEAN KIRK

☎ 0404 165 477

✉ [sean@auswave.com.au](mailto:sean@auswave.com.au)

### ◆ DOUG MATTHEWS

☎ 0414 672 220

✉ [doug@auswave.com.au](mailto:doug@auswave.com.au)

[www.auswave.com.au](http://www.auswave.com.au)



10kN  
FOOTPATH PRODUCTS ONLY  
NO VEHICULAR TRAFFIC



80kN  
CONCRETE SURFACES OR IN  
PROXIMITY TO A VEHICLE THE  
HEIGHT OF THE SURFACE AND THE  
LOAD TRANSFERED SUCH AS PARK  
DRIVEWAYS TO THE SURFACE



150kN  
LIGHT TRUCKS (UP TO 3.5 TONNES)  
HEAVY TRUCKS (UP TO 4.5 TONNES)  
LIGHT TRUCKS (UP TO 3.5 TONNES)  
HEAVY TRUCKS (UP TO 4.5 TONNES)



210kN  
HEAVY TRUCKS (UP TO 4.5 TONNES)  
HEAVY TRUCKS (UP TO 4.5 TONNES)



400kN  
AREA SUITABLE TO CONTAIN  
HEAVY TRUCKS (UP TO 4.5 TONNES)  
HEAVY TRUCKS (UP TO 4.5 TONNES)



600kN  
AIRPORT APPLICABLE



900kN  
AIRPORT TRUCKS



# WEDGEWIRE GRATES



## INDUSTRY LEADERS

Offering a superior, longer wearing product than many products on the market by design, material selection and construction, our Heelguard wedgewire grates are designed to outlast and outperform the competition.

## AUSTRALIAN STANDARDS

Our products undergo rigorous quality checks from start to finish ensuring they meet strict Australian Standards and the high-quality standards we pursue in the industry.

## STAINLESS STEEL LINEAR WEDGEWIRE GRATES

Once a product limited to industrial applications, stainless steel has become a popular medium in residential construction thanks to its strength, scratch and wear resistance, easy maintenance and aesthetic appeal. Stainless steel is the clear choice for industry and savvy homeowners.

Our wedgewire grates offer a visually appealing feature to interior, exterior, commercial and industrial spaces, while enjoying the many benefits of stainless steel. These highly customisable grates add a stylish finish paired with marble, slate and tile, around pools, in bathrooms, kitchens and industrial buildings.



### SEAN KIRK

☎ 0404 165 477

✉ [sean@auswave.com.au](mailto:sean@auswave.com.au)

### DOUG MATTHEWS

☎ 0414 672 220

✉ [doug@auswave.com.au](mailto:doug@auswave.com.au)

[www.auswave.com.au](http://www.auswave.com.au)



10kN  
FOOTWEAR PRODUCTS ONLY  
NO VEHICULAR TRAFFIC



80kN  
AGRICULTURAL VEHICLES & MACHINERY  
VEHICLES WITH A MAXIMUM GROSS WEIGHT OF 8000kg  
VEHICLES WITH A MAXIMUM GROSS WEIGHT OF 8000kg



150kN  
LIGHT TRUCKS WITH A MAXIMUM GROSS WEIGHT OF 15000kg  
VEHICLES WITH A MAXIMUM GROSS WEIGHT OF 15000kg



210kN  
HEAVY TRUCKS AT LOW SPEEDS  
(UNDER 10km/h)



400kN  
AREAS SUITABLE TO CONTAIN THE WEIGHT OF MARITIME EQUIPMENT



600kN  
AIRPORT APPROACH



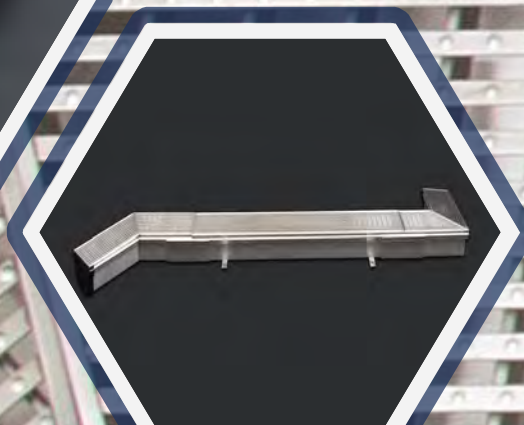
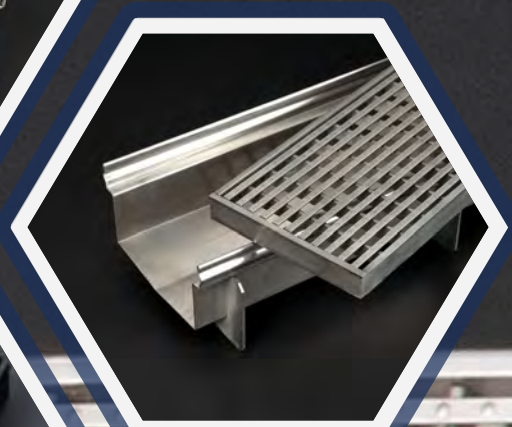
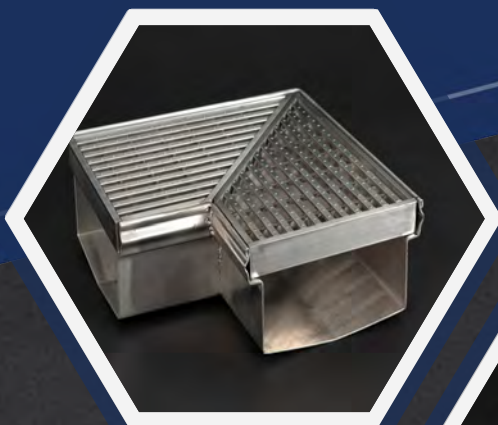
900kN  
AIRPORT TAXIWAYS



# MEET THE FUTURE OF DRAINAGE CLICK DRAIN®

- CLICK DRAIN ® is an innovative system that uses stainless steel and seamless technology to create a modular drainage system. The system is not only high quality and sustainable, but also easy to install, using unique 'click' together fittings. Capturing over 25 years of market research, CLICK DRAIN ® has been designed and built for building and plumbing convenience.

This versatile drainage system creates a seamless finish and can fit perfectly into any environment. Built to Australian standards, you can be guaranteed a superior product with a luxury edge. Every aspect of CLICK DRAIN® has been carefully considered to ensure maximum drainage efficiency.



✉ [sean@auswave.com.au](mailto:sean@auswave.com.au)

✉ [doug@auswave.com.au](mailto:doug@auswave.com.au)





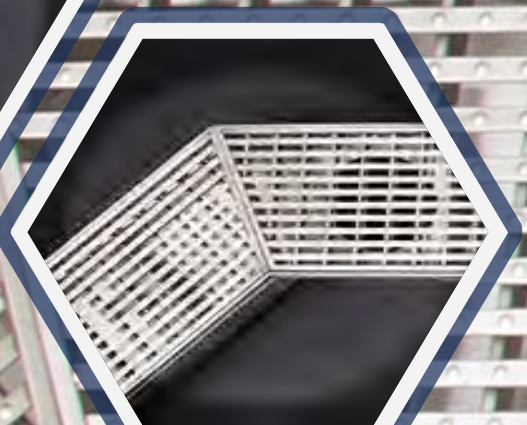
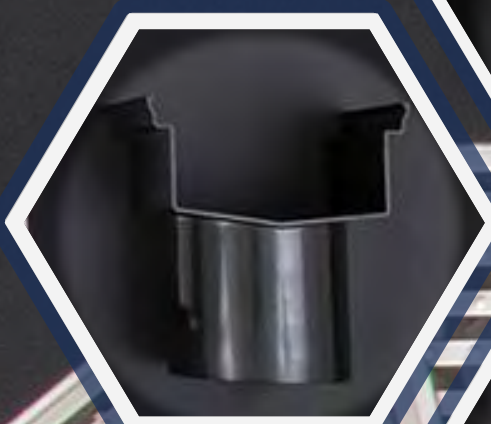
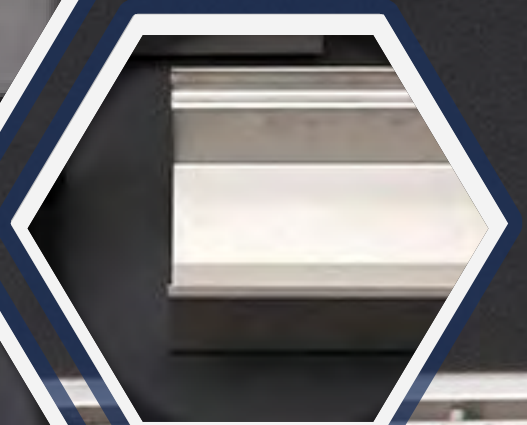
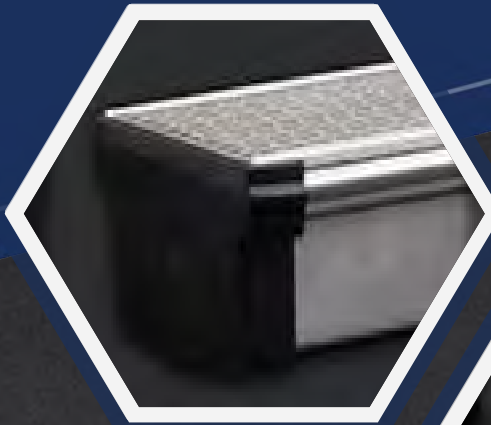
## CLICK DRAIN® BENEFITS

- ◆ CLICK DRAIN® is complete with the provision of self levelling tags for ease of installation
- ◆ At 1/4 the weight packaging is lighter versus heavier polymer channel sections, resulting in cheaper transport rates for the goods to get to site
- ◆ The light weight also aids in quicker installation times and stops potential work place health and safety claims for weight (lifting) against polymer concrete drains
- ◆ When polymer concrete is cut it produces a type of concrete dust that is bad for the installer and the environment
- ◆ CLICK DRAIN® produces a seamless drain run with a full stainless steel edge profile
- ◆ Superior water flow through less resistance over abrasive polymer drain fishes

## CLICK DRAIN® A GRATE INNOVATION TO SERVICE

Using PAIGE STAINLESS HEELGUARD® grating and capturing over 25 years of market research this system is specifically designed and built for the civil drainage, plumbing and building industry.

This patented product (Australian Patent Number 2007902962) enables both builders and plumbers to basically style the drain on site as required, its clever and unique `click` together system has outlet sections, joiner sections, change of direction sections and stop ends to create a drain for all site requirements.



◆ SEAN KIRK

☎ 0404 165 477

✉ [sean@auswave.com.au](mailto:sean@auswave.com.au)

◆ DOUG MATTHEWS

☎ 0414 672 220

✉ [doug@auswave.com.au](mailto:doug@auswave.com.au)

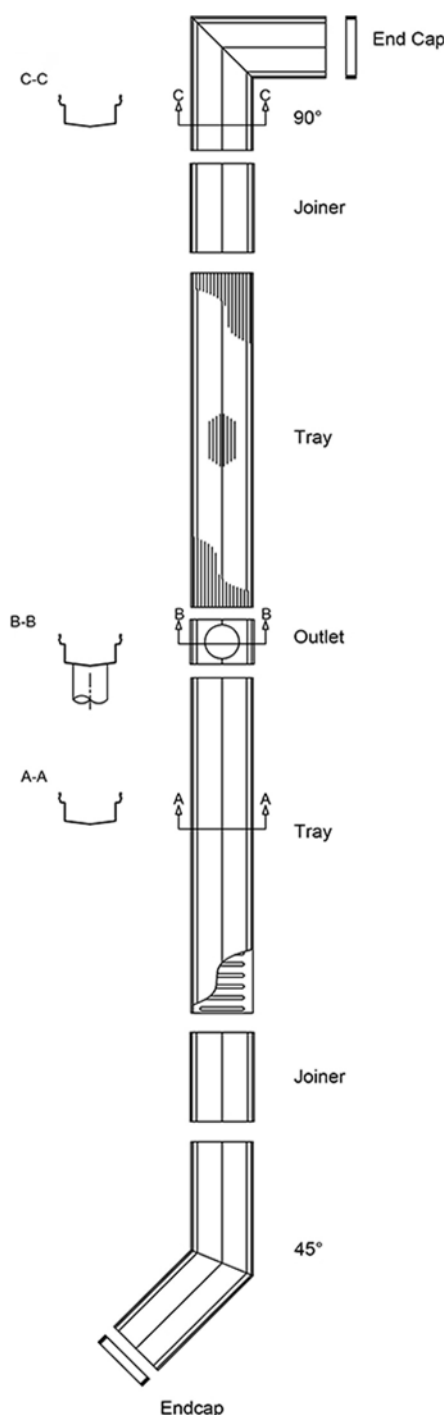
[www.auswave.com.au](http://www.auswave.com.au)





## CLICK DRAIN® MANUFACTURED BY PAIGE STAINLESS FABRICATIONS

- ◆ **End Caps**  
Drain terminating ends are simply clicked on and are Green Tag certified
- ◆ **90 Degree Drain**  
90 degree and 45 degree sections are standard for change of direction
- ◆ **Tray with HEELGUARD**  
Channel lengths do not crack or shatter when dropped. Revolutionary "click" together channel lengths and components
- ◆ **Outlet**  
Able to be cut using conventional tools, standard hole saws and inert cutting disc materials that are not harmful to the environment
- ◆ **Tray with pressed grate**  
2 metre and 1 metre channel lengths for faster and more accurate install procedures. Light weight compared to traditional polymer / concrete drain sections
- ◆ **Joiner**  
Available as a stock item minimising down time and late ordering issues, it is packed in 1 metre and 2 metre sections



◆ **SEAN KIRK**

☎ 0404 165 477

✉ [sean@auswave.com.au](mailto:sean@auswave.com.au)

◆ **DOUG**

☎ 0414 672 220

✉ [doug@auswave.com.au](mailto:doug@auswave.com.au)

[www.auswave.com.au](http://www.auswave.com.au)





# CONTACT US



## PROUDLY AUSTRALIAN MADE

- ◆ Servicing the drainage/ architectural market nationally for the past 15 years
- ◆ Grates Aligned to AUST / NZ Load Standards for load rating
- ◆ Grates Aligned to AUST/ NZ Load Standards for slip resistance
- ◆ Bike Safe Standards
- ◆ Certification available on request
- ◆ Specialising in custom solutions

## CONTACT OUR HELPFUL AND EXPERIENCED TEAM TO DISCUSS YOUR PROJECT NEEDS

Sean: 0404 165 477  
sean@auswave.com.au

Doug: 0414 672 220  
doug@auswave.com.au

AUSWAVE PRODUCTS (AUST) PTY LTD  
A.B.N. 28 613 210 316

PO Box 110 Ingleburn NSW 1890

(02) 9876 8143

### SEAN KIRK

☎ 0404 165 477

✉ sean@auswave.com.au

### DOUG MATTHEWS

☎ 0414 672 220

✉ doug@auswave.com.au

[www.auswave.com.au](http://www.auswave.com.au)



10kN  
FOOTWEAR PRODUCTS ONLY  
NO VEHICULAR TRAFFIC



80kN  
SUITABLE FOR A VEHICLE TO  
CARRY THE EQUIPMENT AND  
LIGHT TRAFFIC SUCH AS PAVS  
TRUCKS TO USE THE ROAD



150kN  
LIGHT TRUCKS WITH A MAX  
GROSS VEHICLE WEIGHT OF  
3.5 TONNES OR LESS  
CARRYING A MAXIMUM OF  
10 TONNES



210kN  
HEAVY TRUCKS AT LOW  
SPEEDS



400kN  
AREA SUITABLE TO CONTAIN  
WEIGHT OF MARITIME  
VESSELS



600kN  
AIRPORT APRONS



900kN  
AIRPORT TARMAC